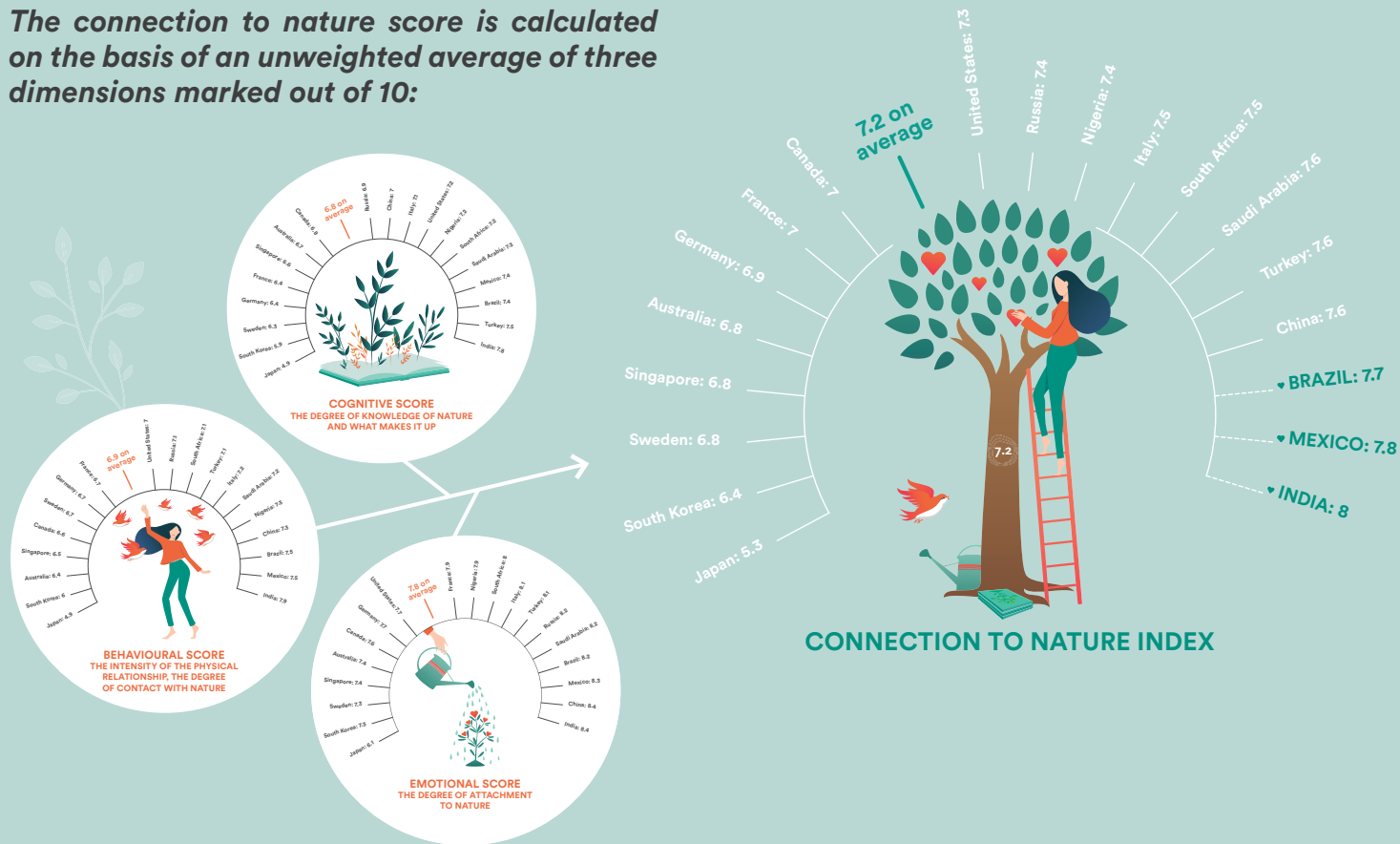


Creation of a connection to nature score

An unsatisfied need for nature

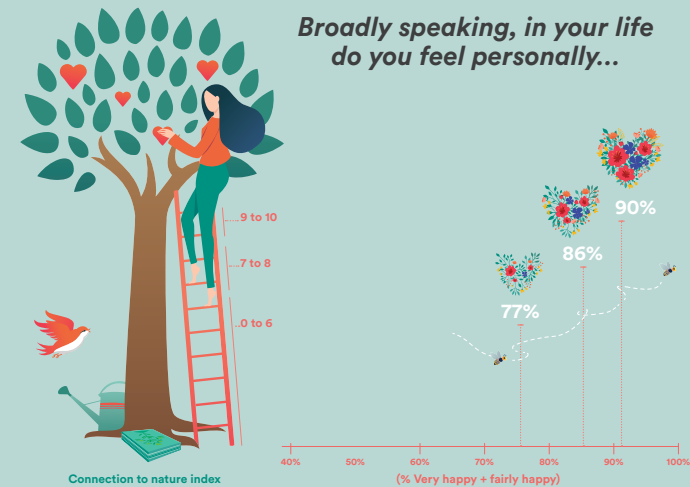
85% WISH TO BE IN CONTACT MORE REGULARLY WITH NATURE

The connection to nature score is calculated on the basis of an unweighted average of three dimensions marked out of 10:

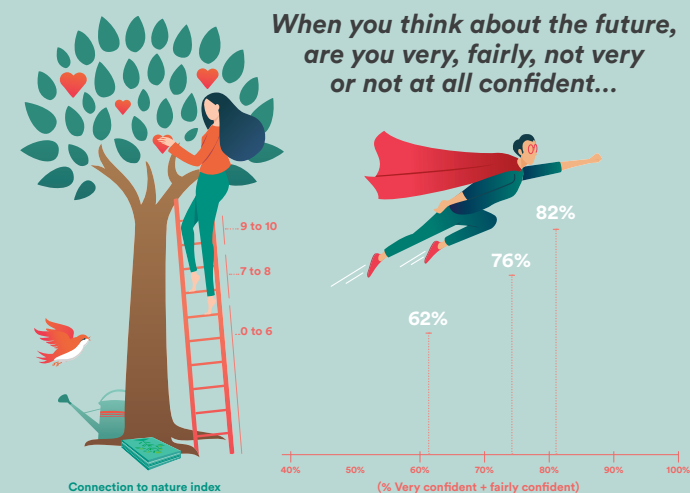


Nature and confidence

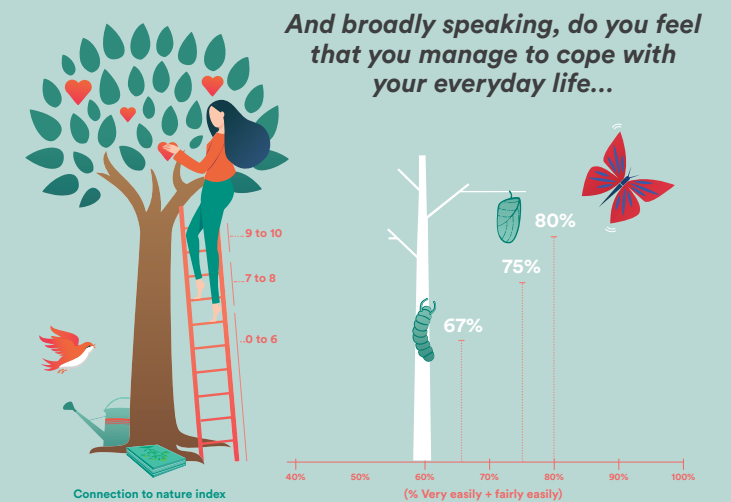
HAPPINESS



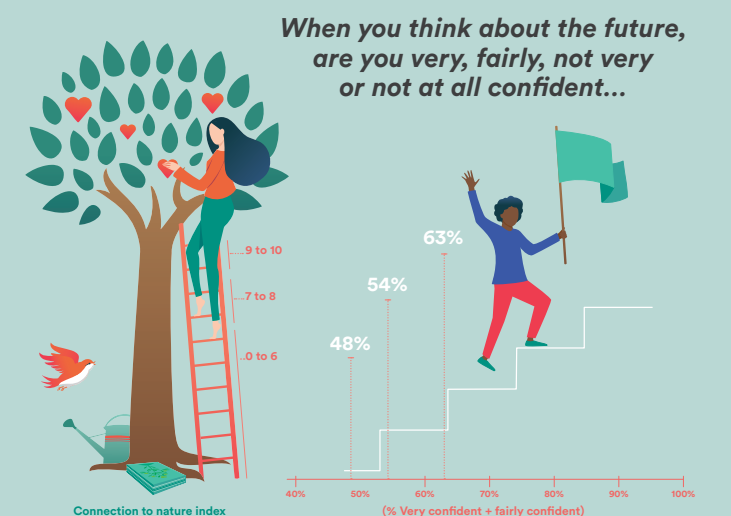
CONFIDENCE IN ONE'S PERSONAL SITUATION



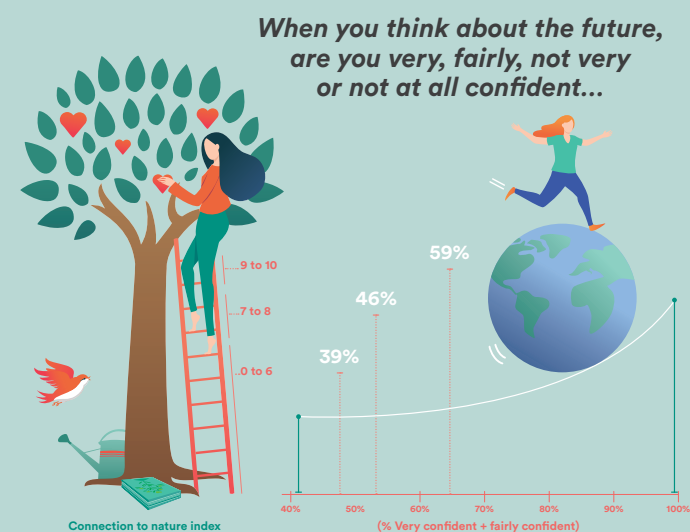
ABLE TO COPE FROM DAY TO DAY



CONFIDENCE IN THE COUNTRY'S SITUATION

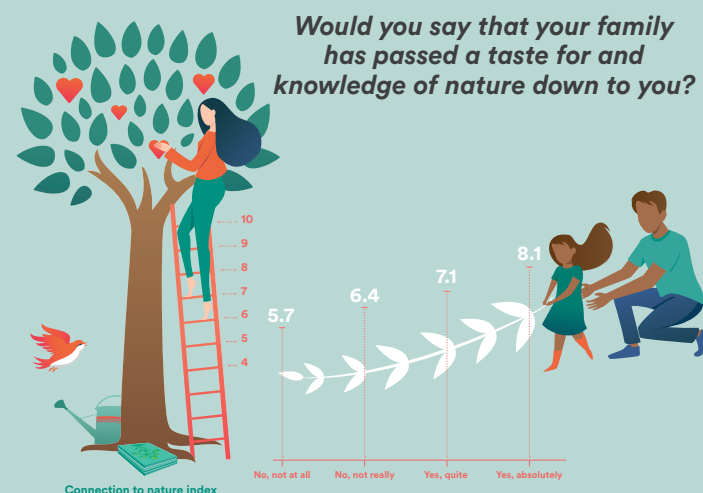


CONFIDENCE IN THE SITUATION OF THE PLANET



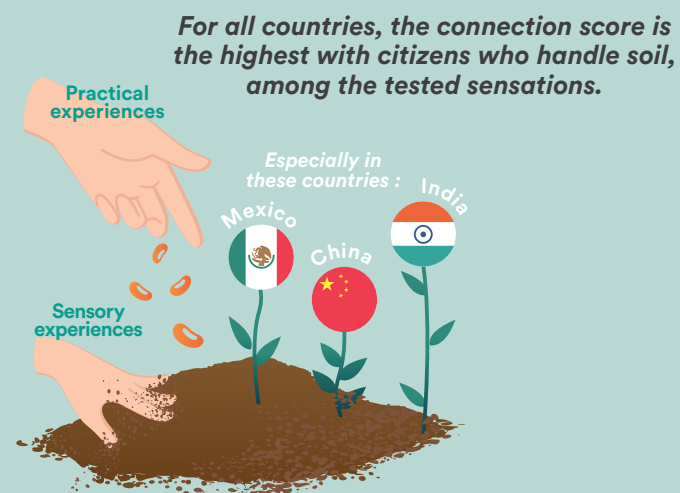
The lessons learned from the 2020 edition and courses of action

THE MORE CITIZENS HAVE INHERITED A TASTE FOR NATURE, THE MORE CONNECTED THEY ARE



86% PASS THEIR TASTE FOR AND KNOWLEDGE OF NATURE DOWN TO THEIR CHILDREN AND THEIR FAMILY CIRCLE

RELATIONSHIP TO THE EARTH, A POWERFUL INSTRUMENT OF CONNECTION TO NATURE

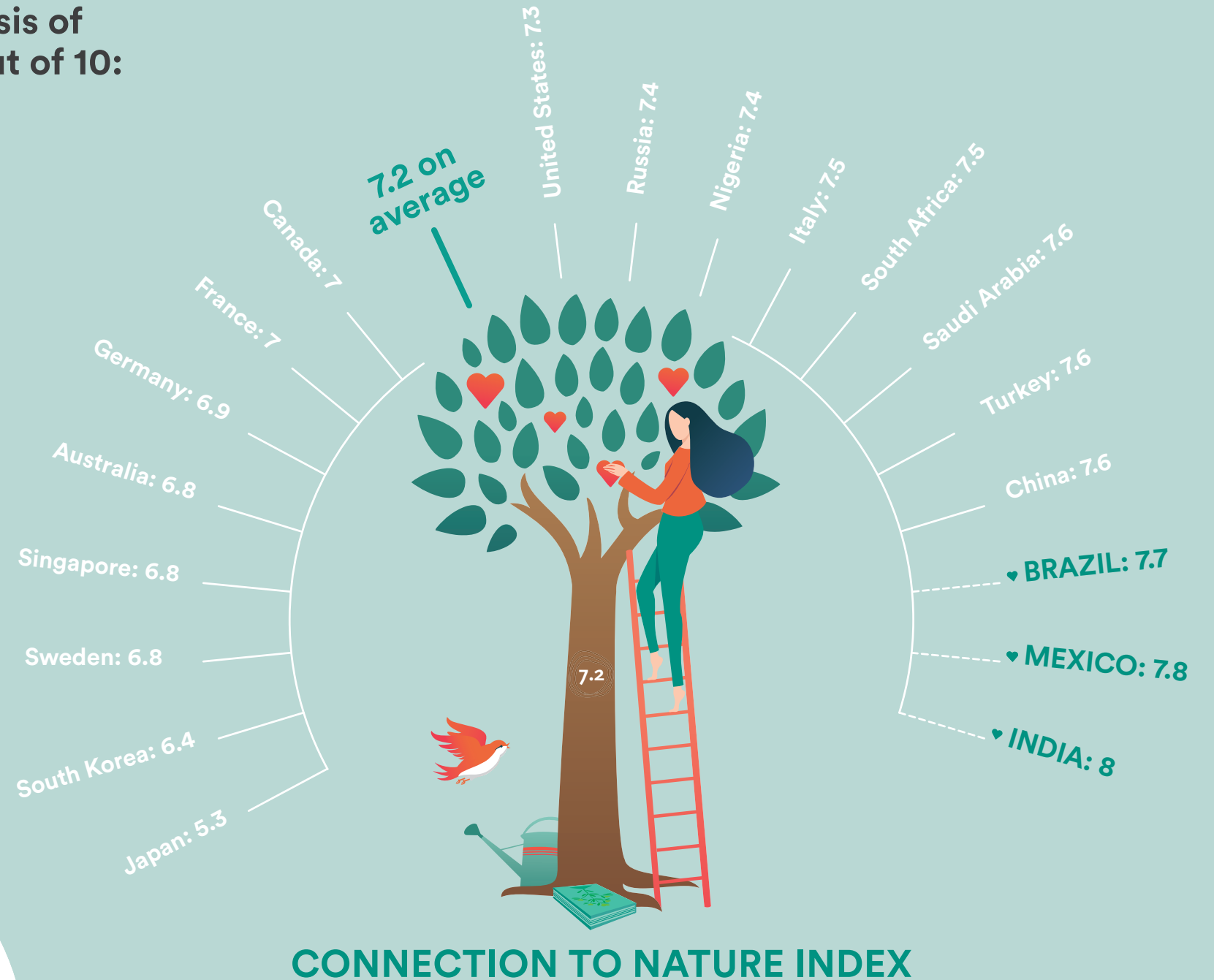
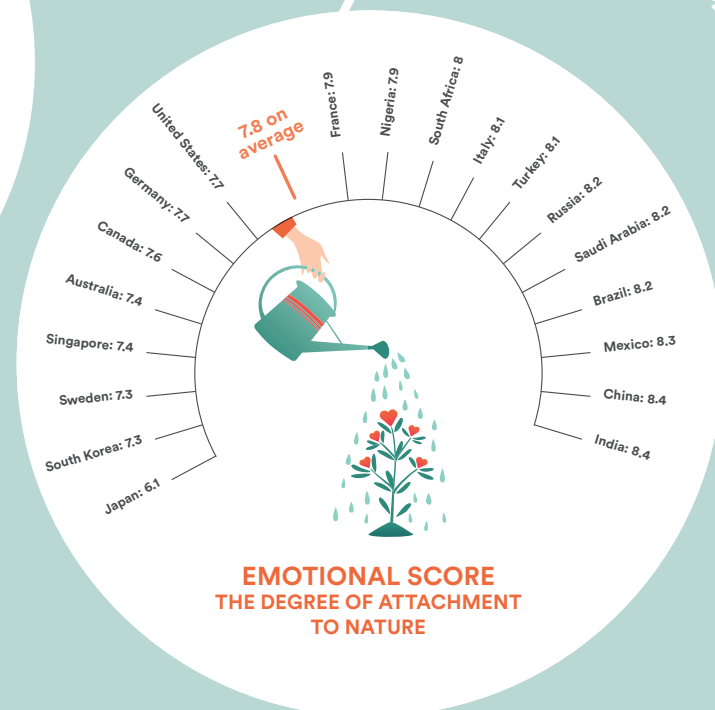
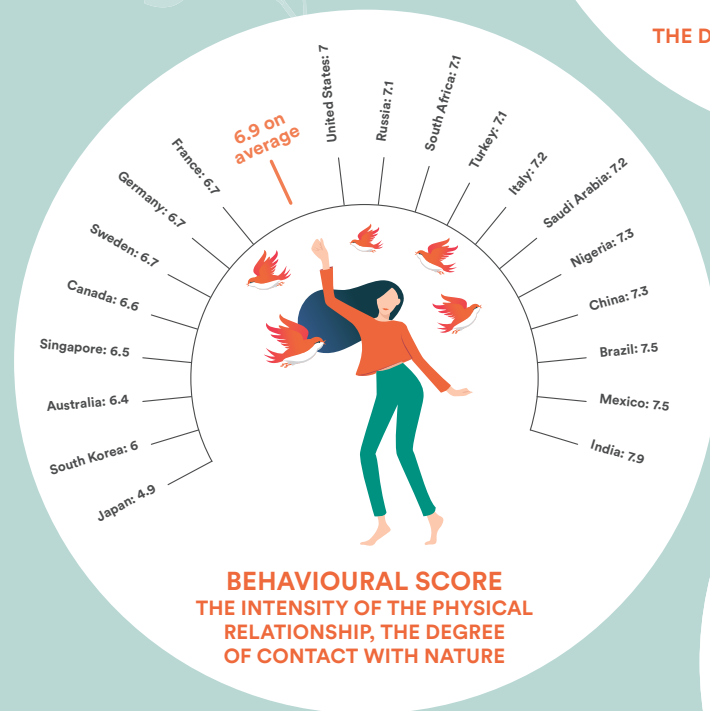
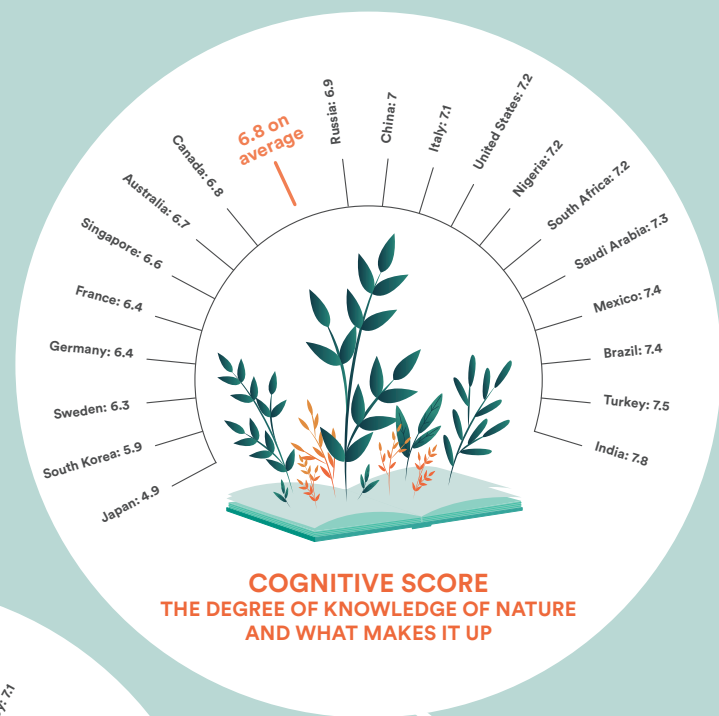


57% SAY THEY LACK TIME, 20% CONSIDER THAT NATURE IS TOO FAR AWAY FROM WHERE THEY LIVE

An unsatisfied need for nature

85% WISH TO BE IN CONTACT MORE REGULARLY WITH NATURE

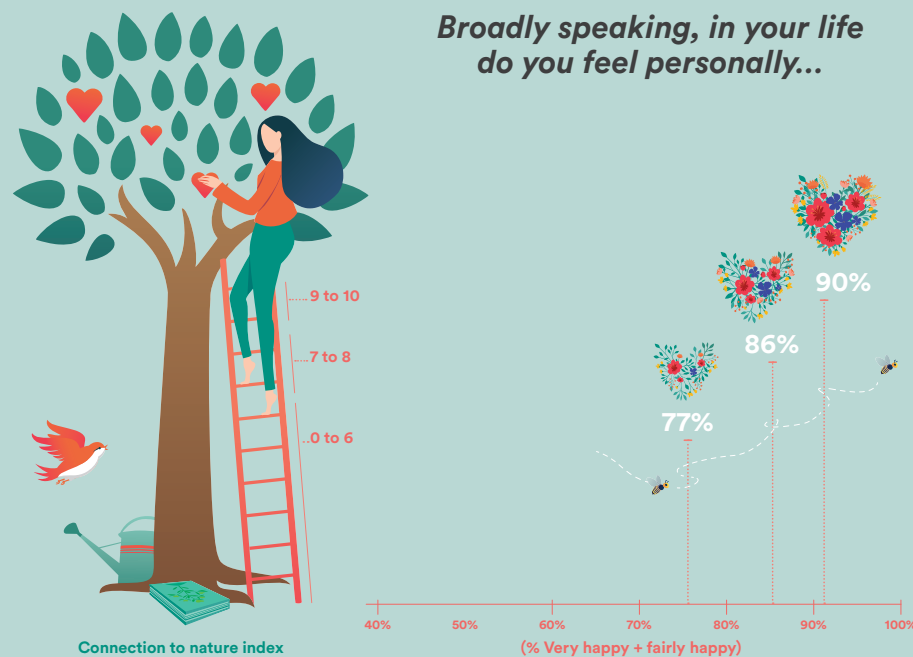
The connection to nature score is calculated on the basis of an unweighted average of three dimensions marked out of 10:



Nature and confidence

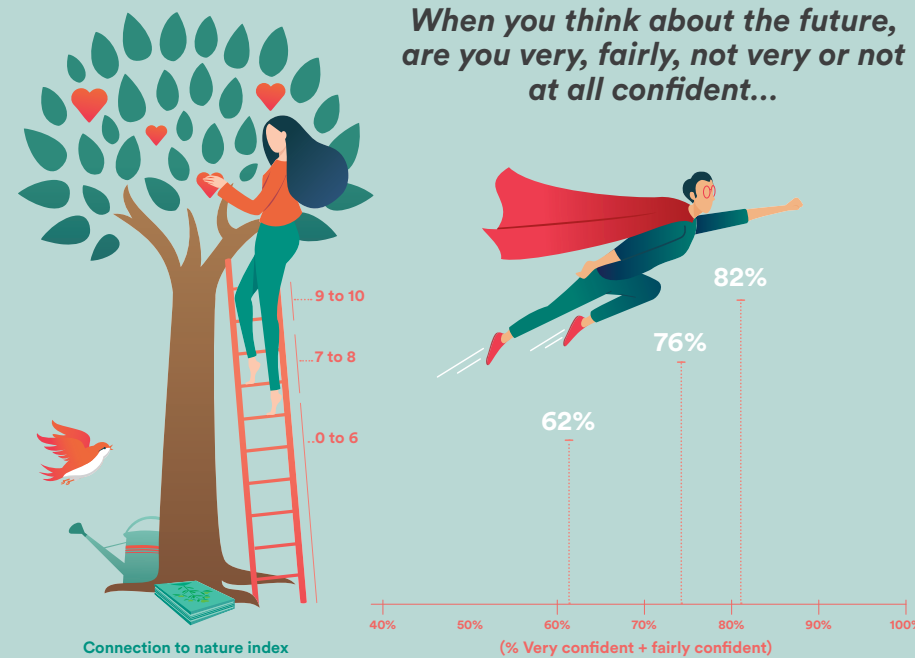
HAPPINESS

Broadly speaking, in your life do you feel personally...



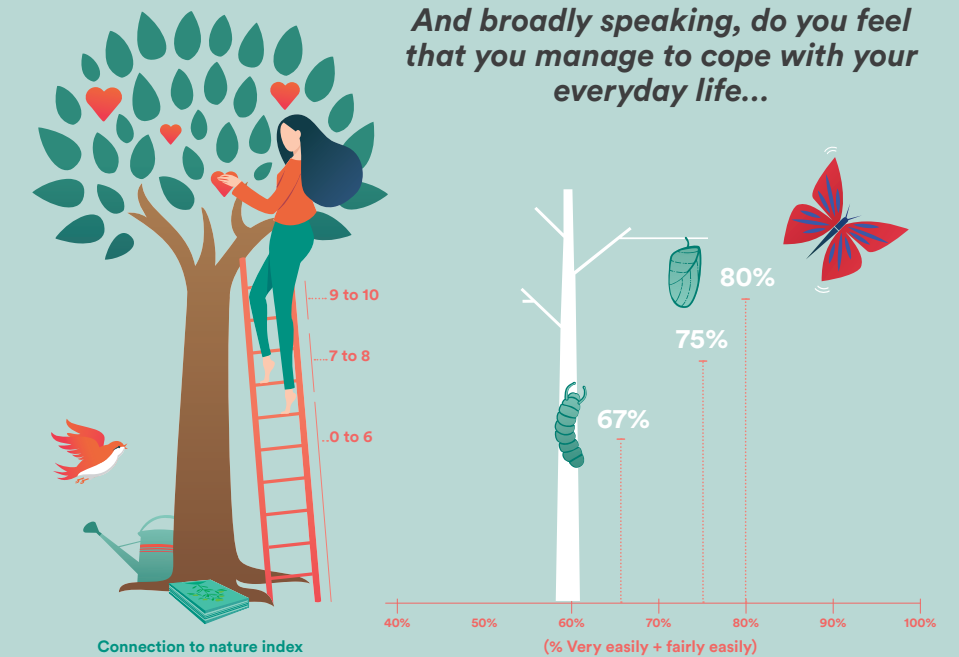
CONFIDENCE IN ONE'S PERSONAL SITUATION

When you think about the future, are you very, fairly, not very or not at all confident...



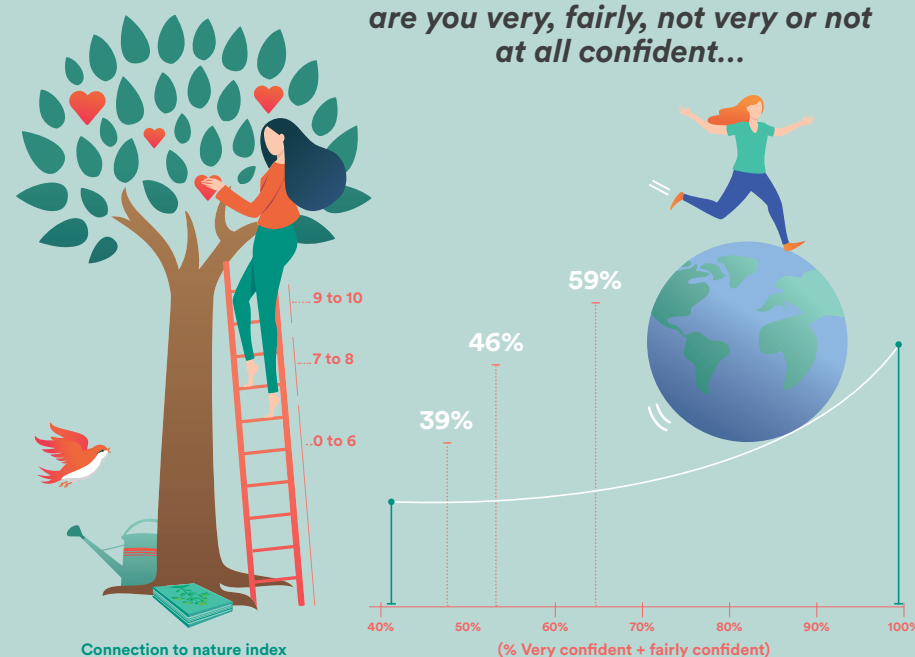
ABLE TO COPE FROM DAY TO DAY

And broadly speaking, do you feel that you manage to cope with your everyday life...



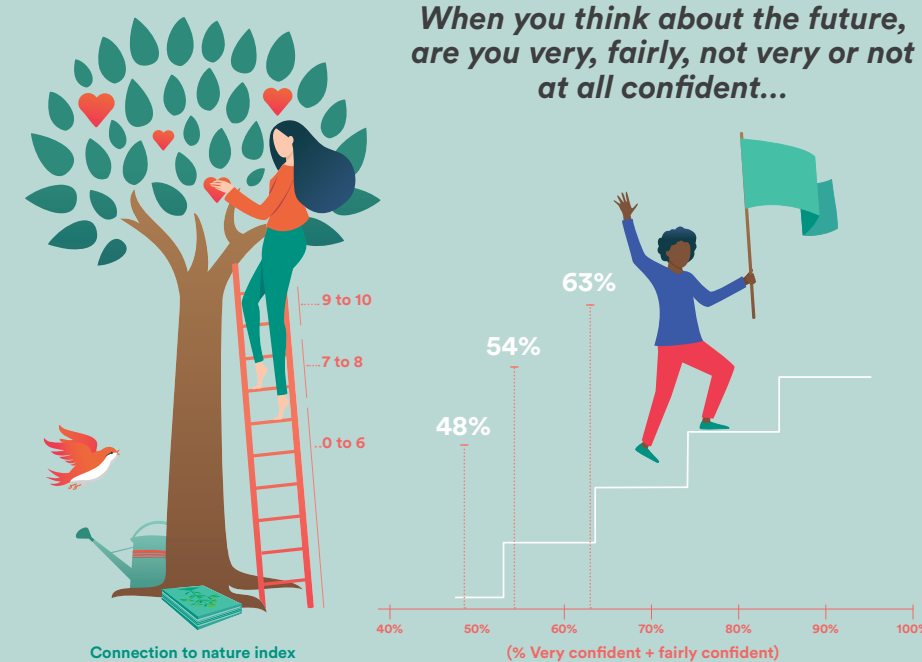
CONFIDENCE IN THE SITUATION OF THE PLANET

When you think about the future, are you very, fairly, not very or not at all confident...



CONFIDENCE IN THE COUNTRY'S SITUATION

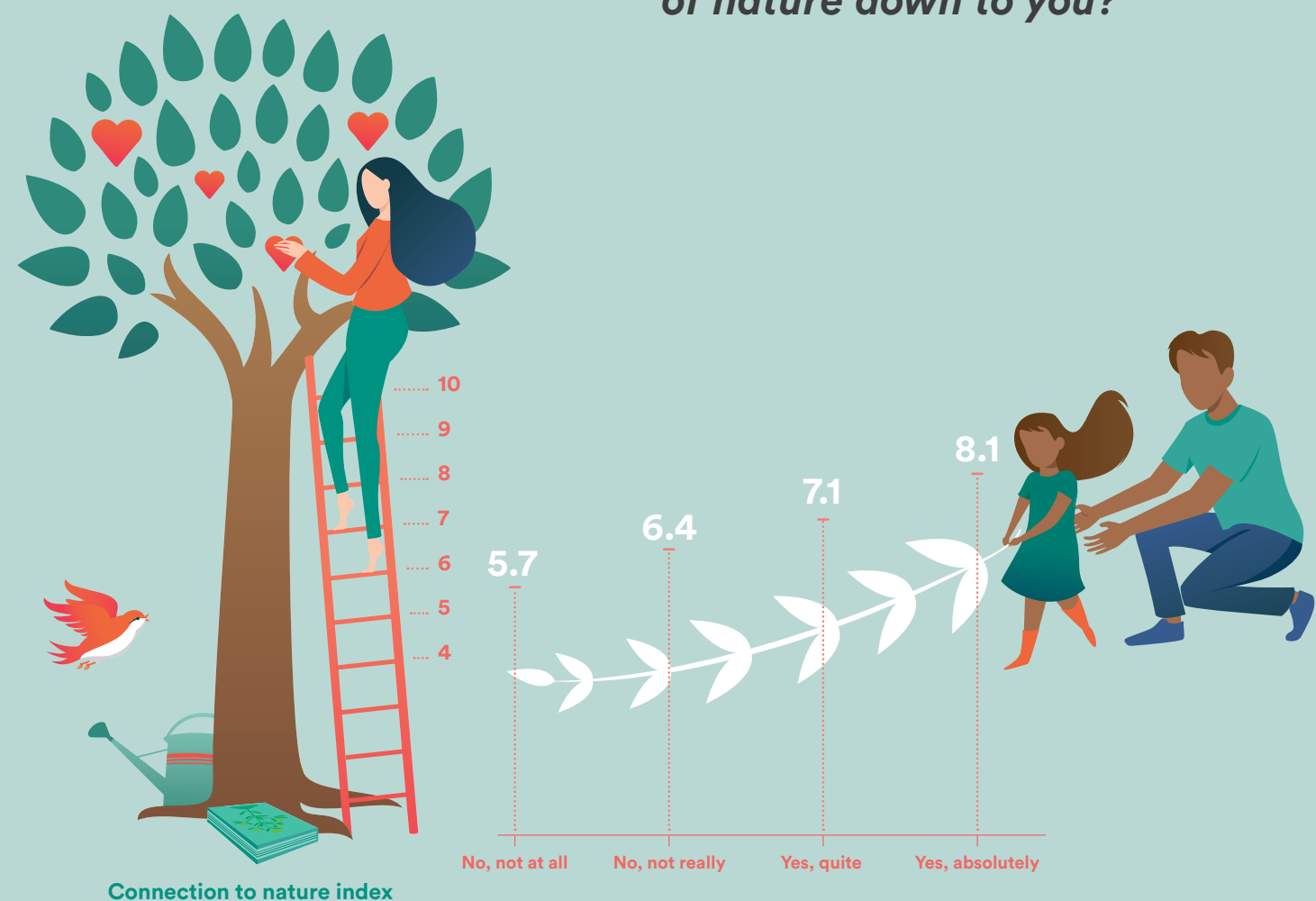
When you think about the future, are you very, fairly, not very or not at all confident...



The lessons learned from the 2020 edition and courses of action

THE MORE CITIZENS HAVE INHERITED A TASTE FOR NATURE, THE MORE CONNECTED THEY ARE

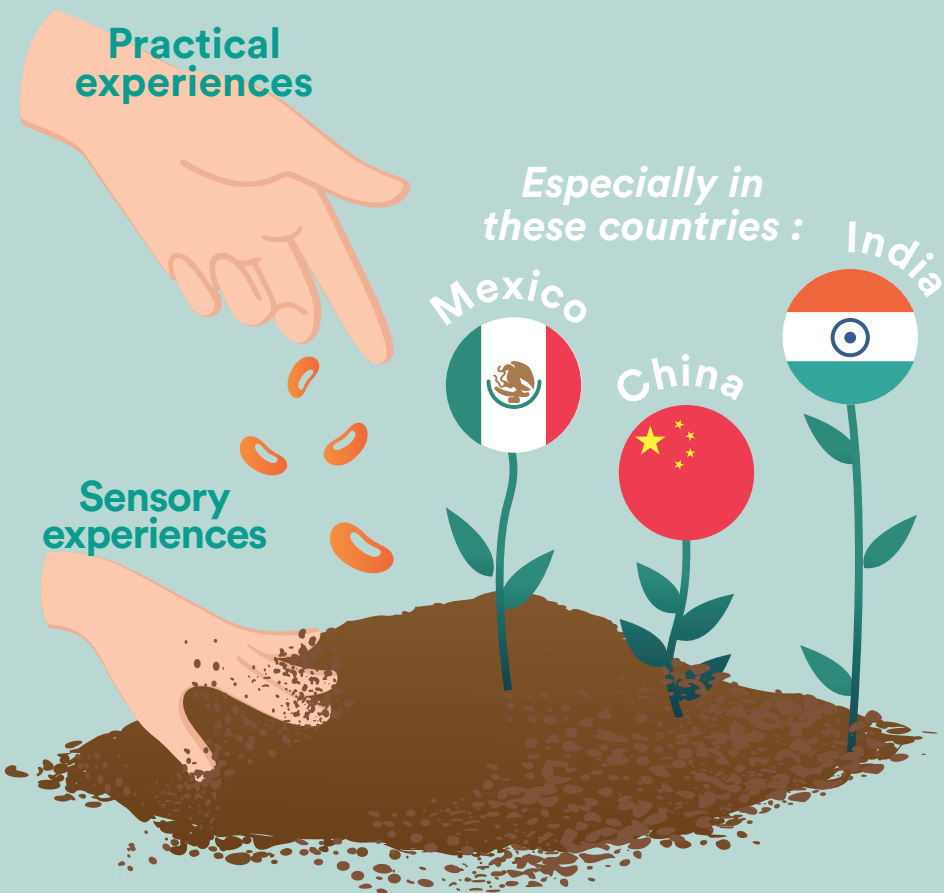
Would you say that your family has passed a taste for and knowledge of nature down to you?



86% PASS THEIR TASTE FOR AND KNOWLEDGE OF NATURE DOWN TO THEIR CHILDREN AND THEIR FAMILY CIRCLE

RELATIONSHIP TO THE EARTH, A POWERFUL INSTRUMENT OF CONNECTION TO NATURE

For all countries, the connection score is the highest with citizens who handle soil, among the tested sensations.



57% SAY THEY LACK TIME, 20% CONSIDER THAT NATURE IS TOO FAR AWAY FROM WHERE THEY LIVE